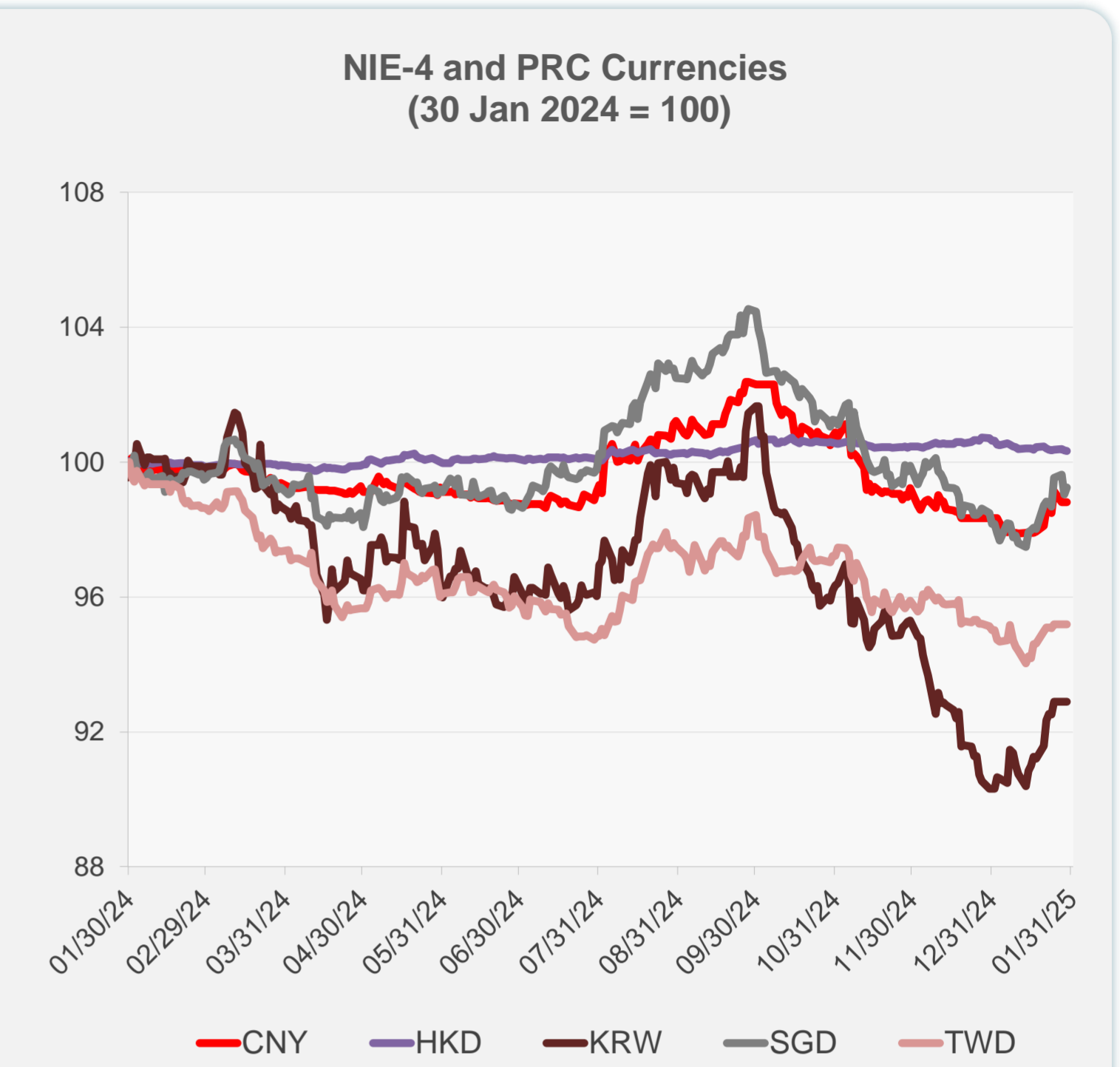
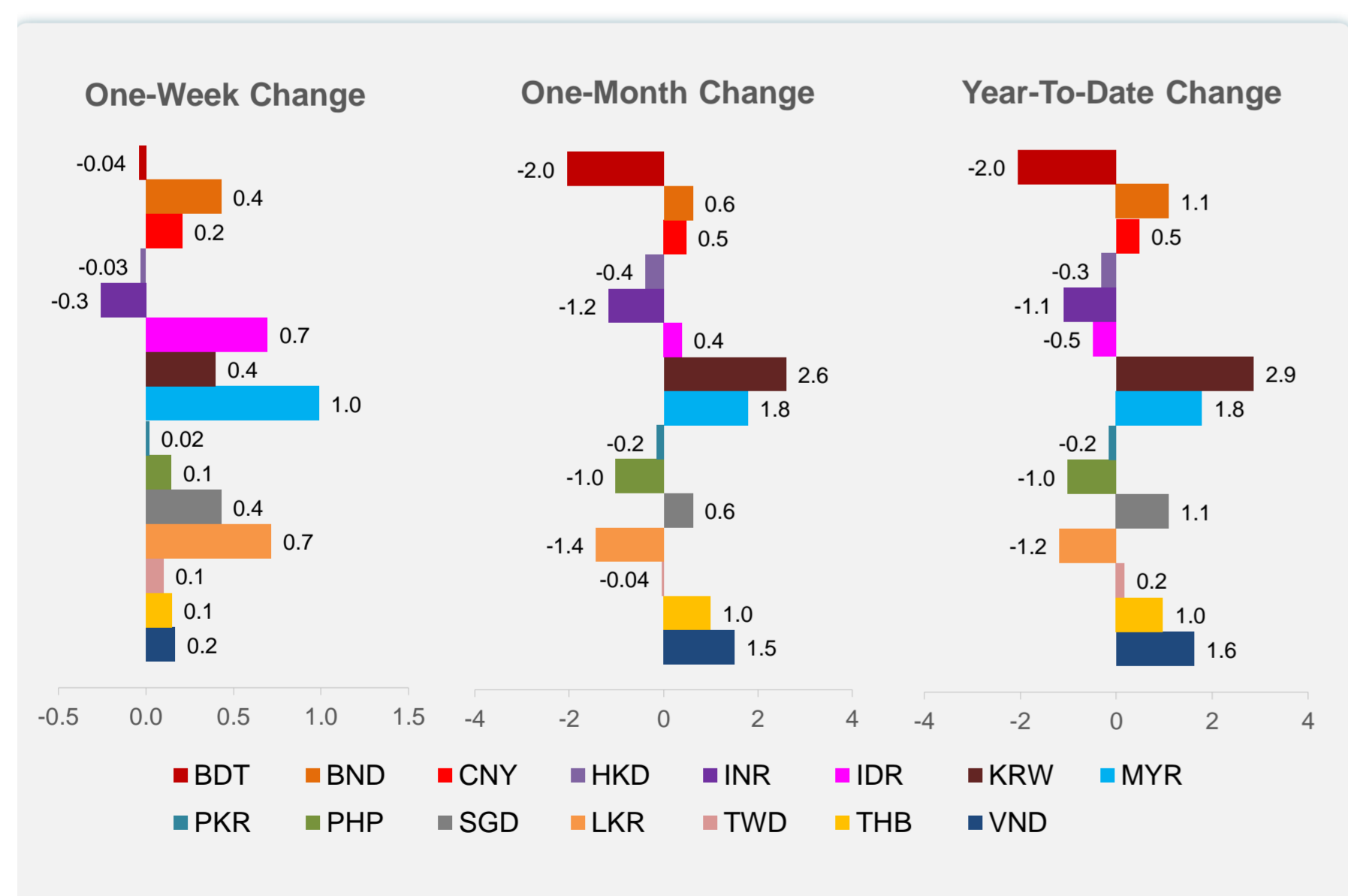
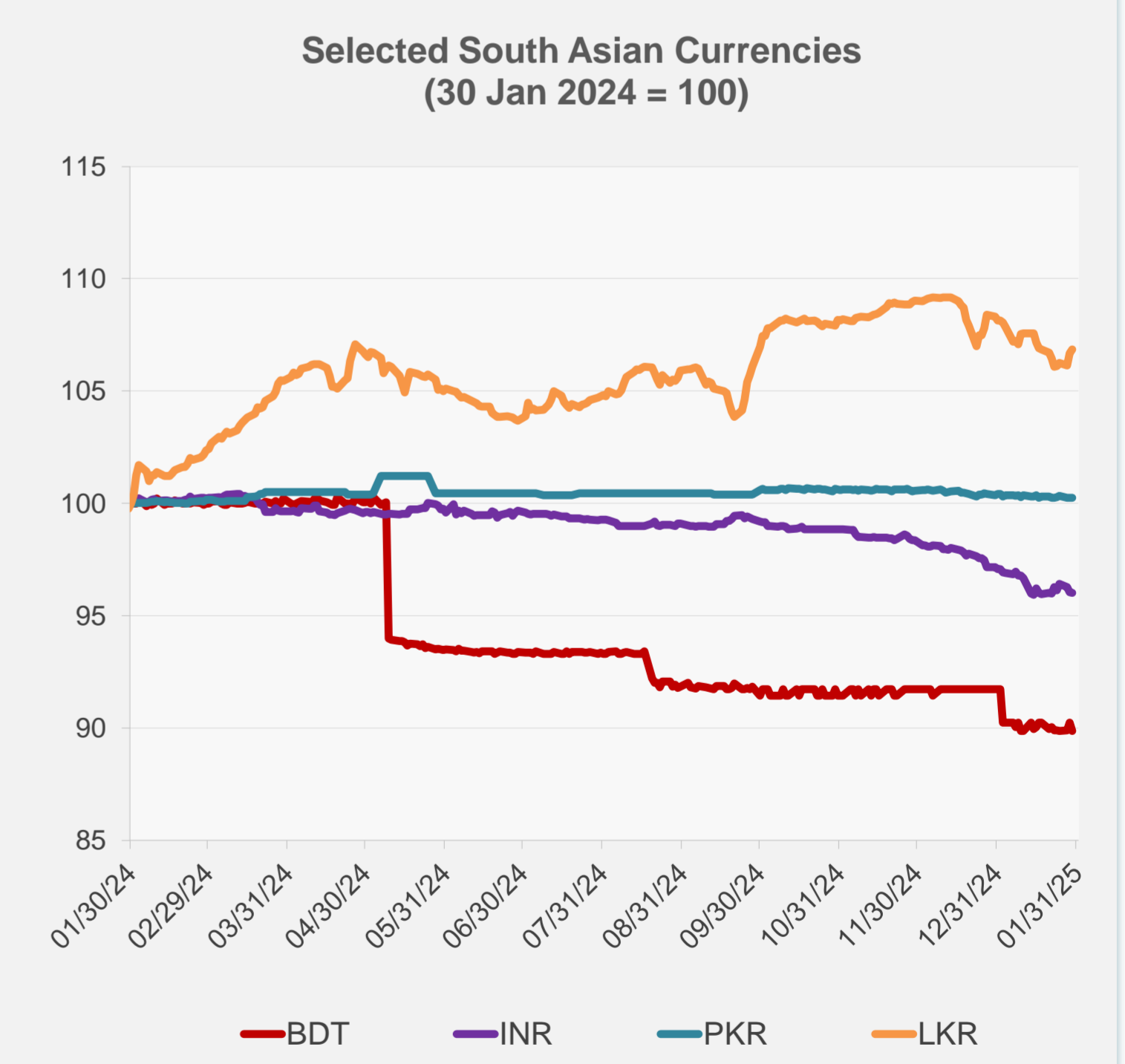
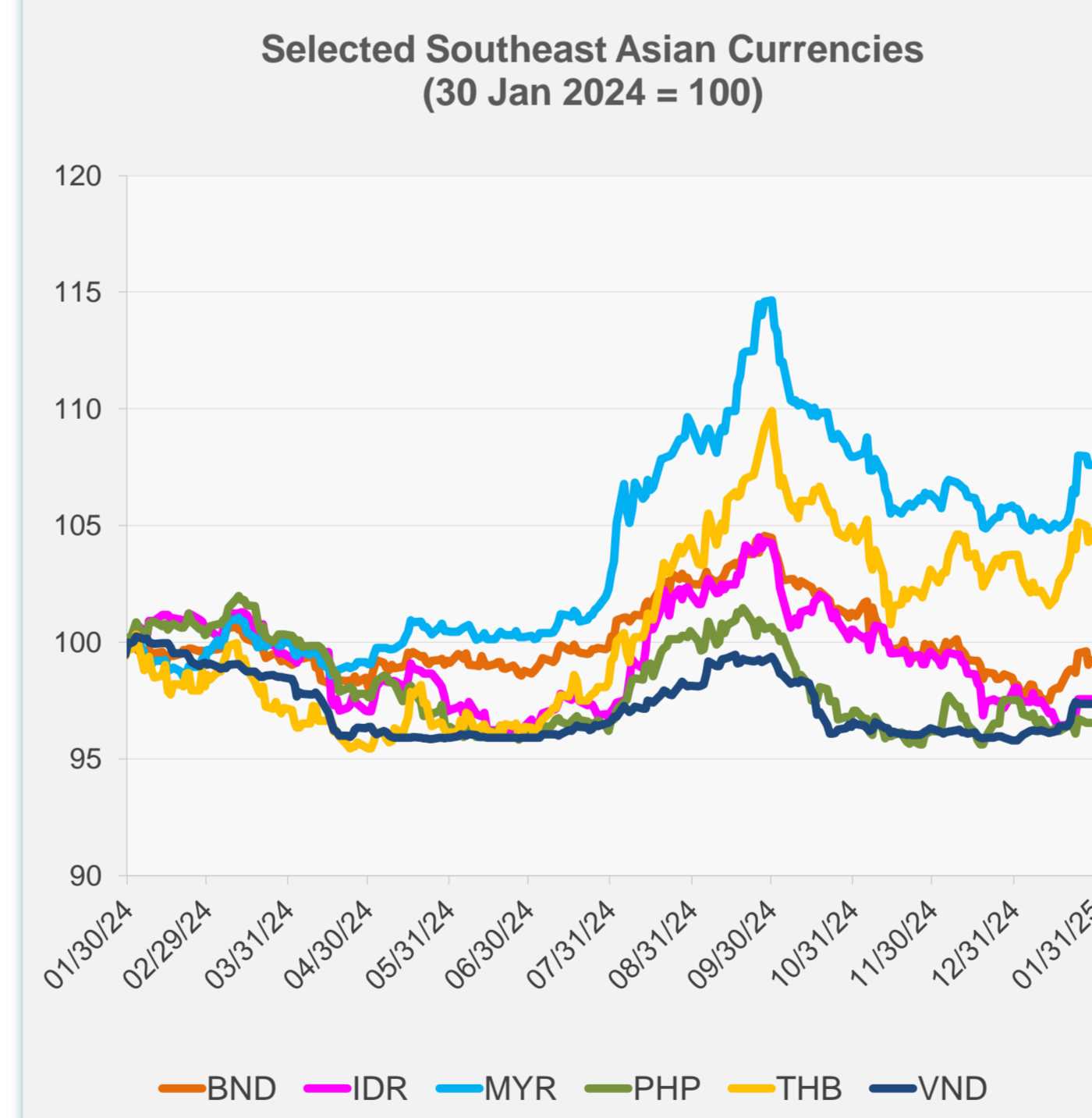


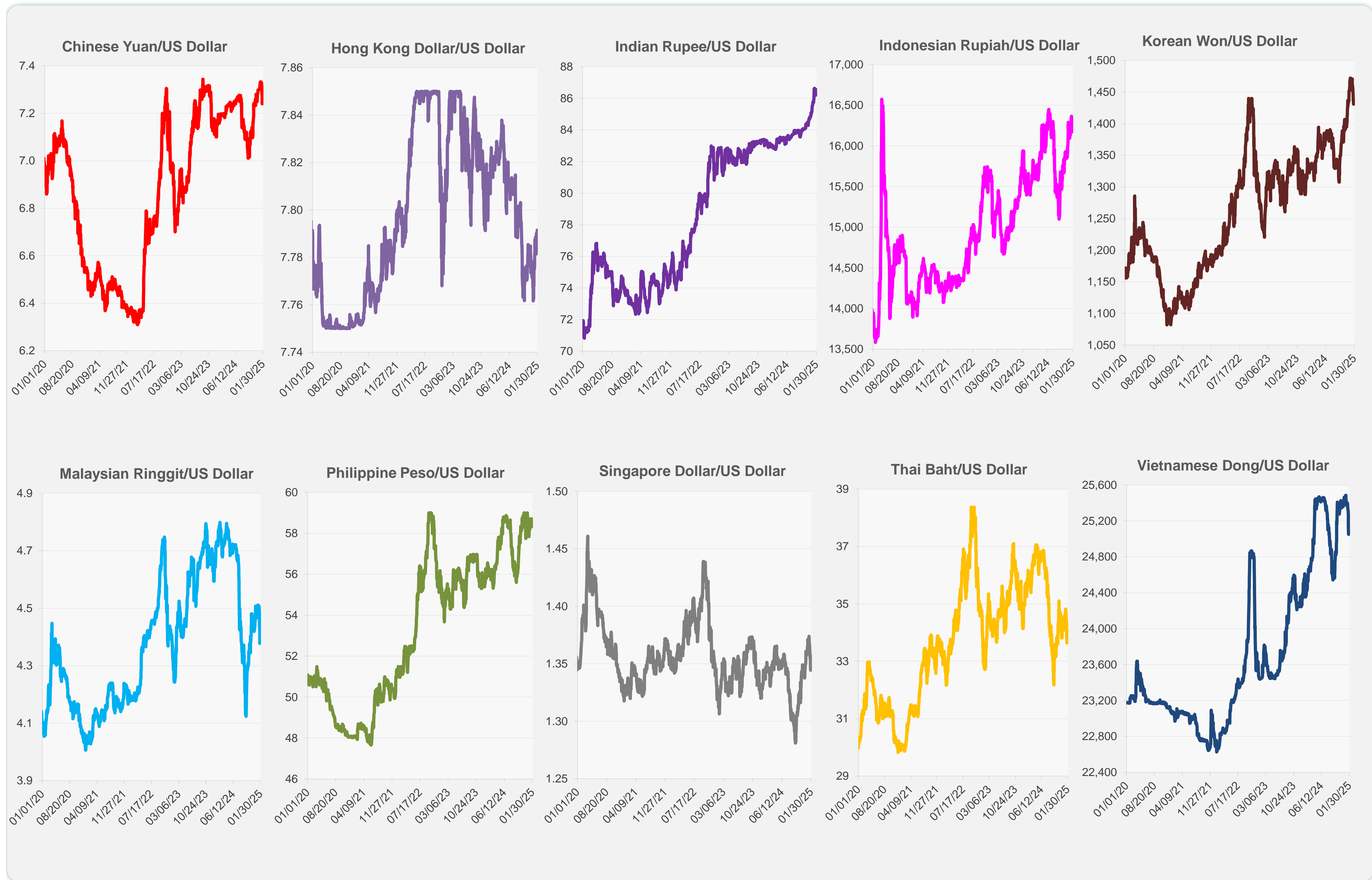
	Latest Closing	% change from Previous Day	% change from 01-Jan-25
Euro	0.96	-0.04	0.63
Japanese yen (JPY)	155.01	0.46	1.39
Bangladeshi taka (BDT)	122.00	-0.41	-2.05
Brunei dollar (BND)	1.35	0.20	1.09
Chinese yuan (CNY)	7.26	0.00	0.48
Hong Kong dollar (HKD)	7.79	-0.01	-0.30
Indian rupee (INR)	86.55	-0.02	-1.08
Indonesian rupiah (IDR)	16,172.50	0.00	-0.48
Korean won (KRW)	1,431.20	0.00	2.86
Malaysian ringgit (MYR)	4.39	0.00	1.79
Pakistan rupee (PKR)	278.80	0.02	-0.15
Philippine peso (PHP)	58.44	0.00	-1.01
Singapore dollar (SGD)	1.35	0.20	1.09
Sri Lanka rupee (LKR)	296.50	0.15	-1.18
Taipei,China NT dollar (TWD)	32.73	0.00	0.17
Thai baht (THB)	33.77	0.43	0.98
Vietnamese dong (VND)	25,078.00	0.00	1.62



NIE = Newly Industrialized Economies



Note: Negative/Decreasing values indicate depreciation of local currency, and positive/increasing values indicate appreciation.
Source: ADB calculations using data from Haver Analytics.

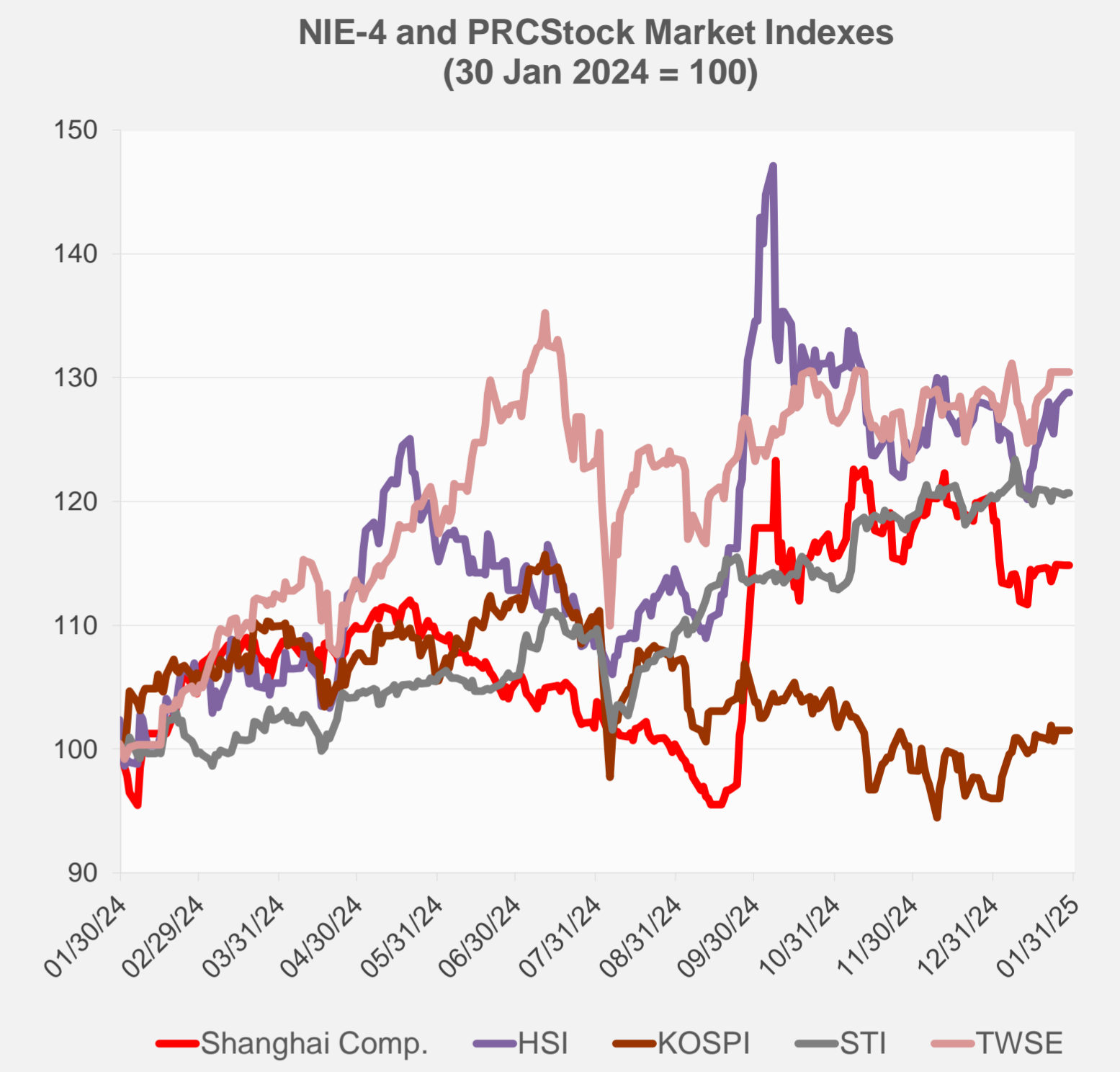
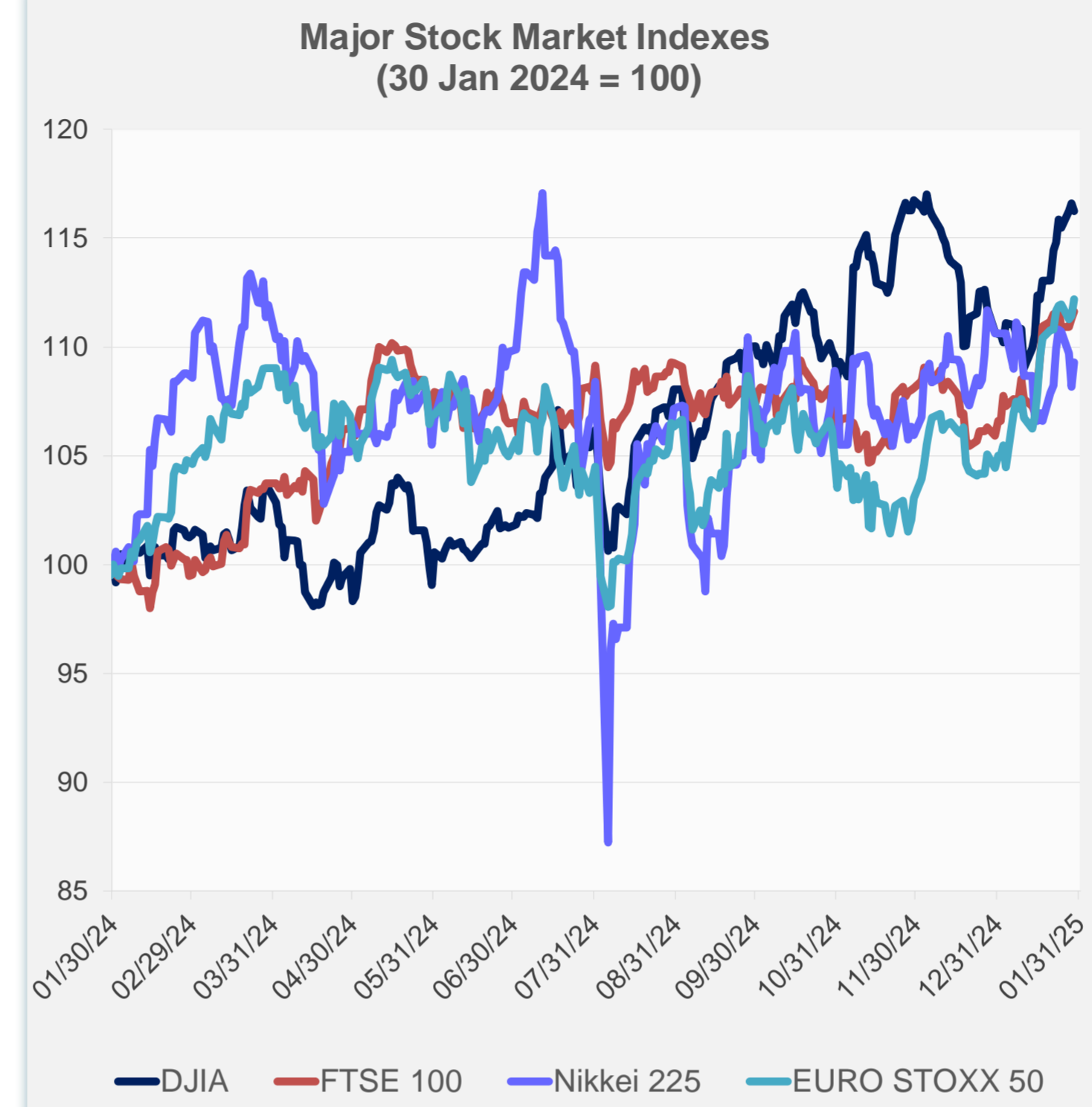


Source: Haver Analytics.

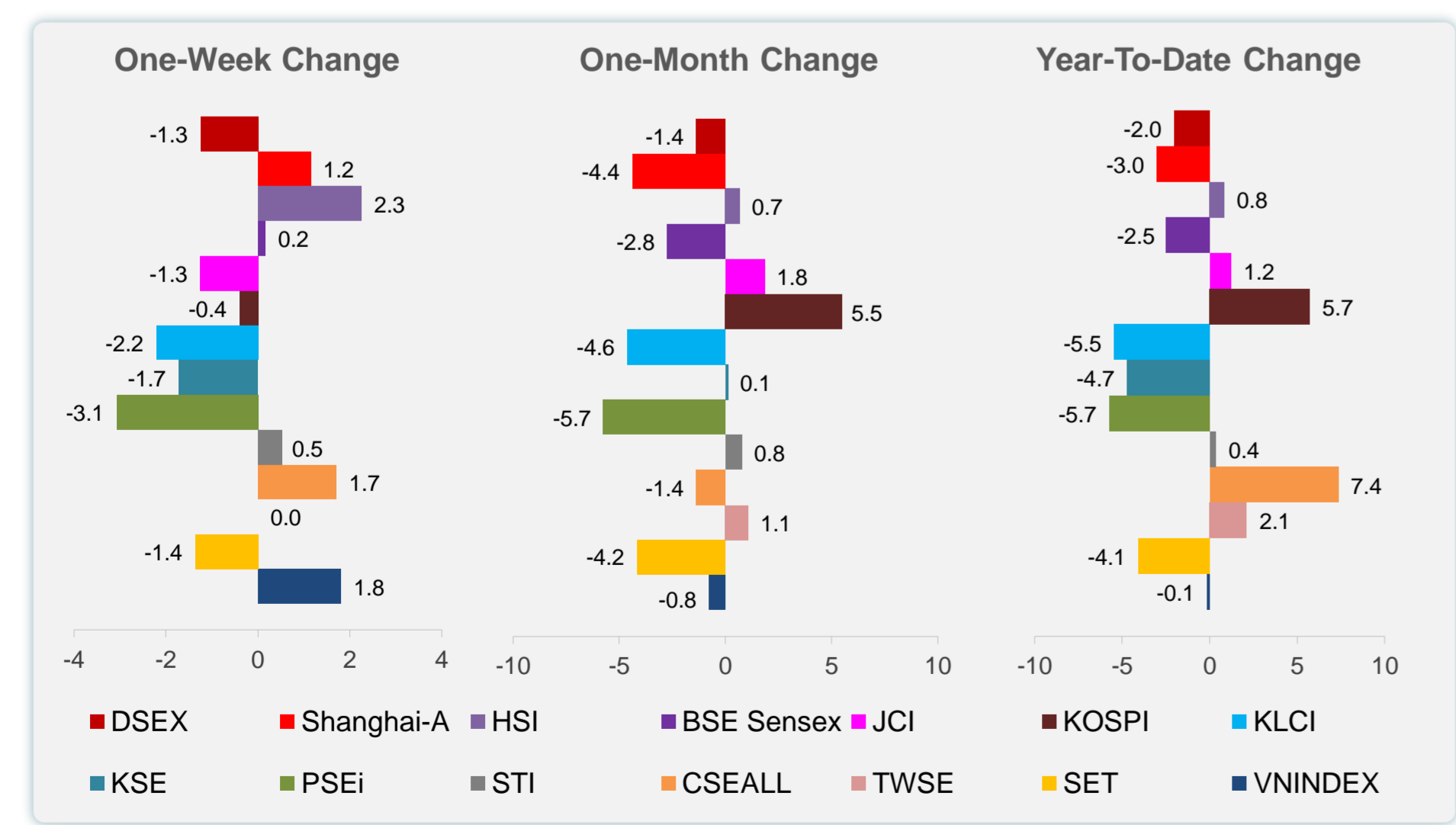
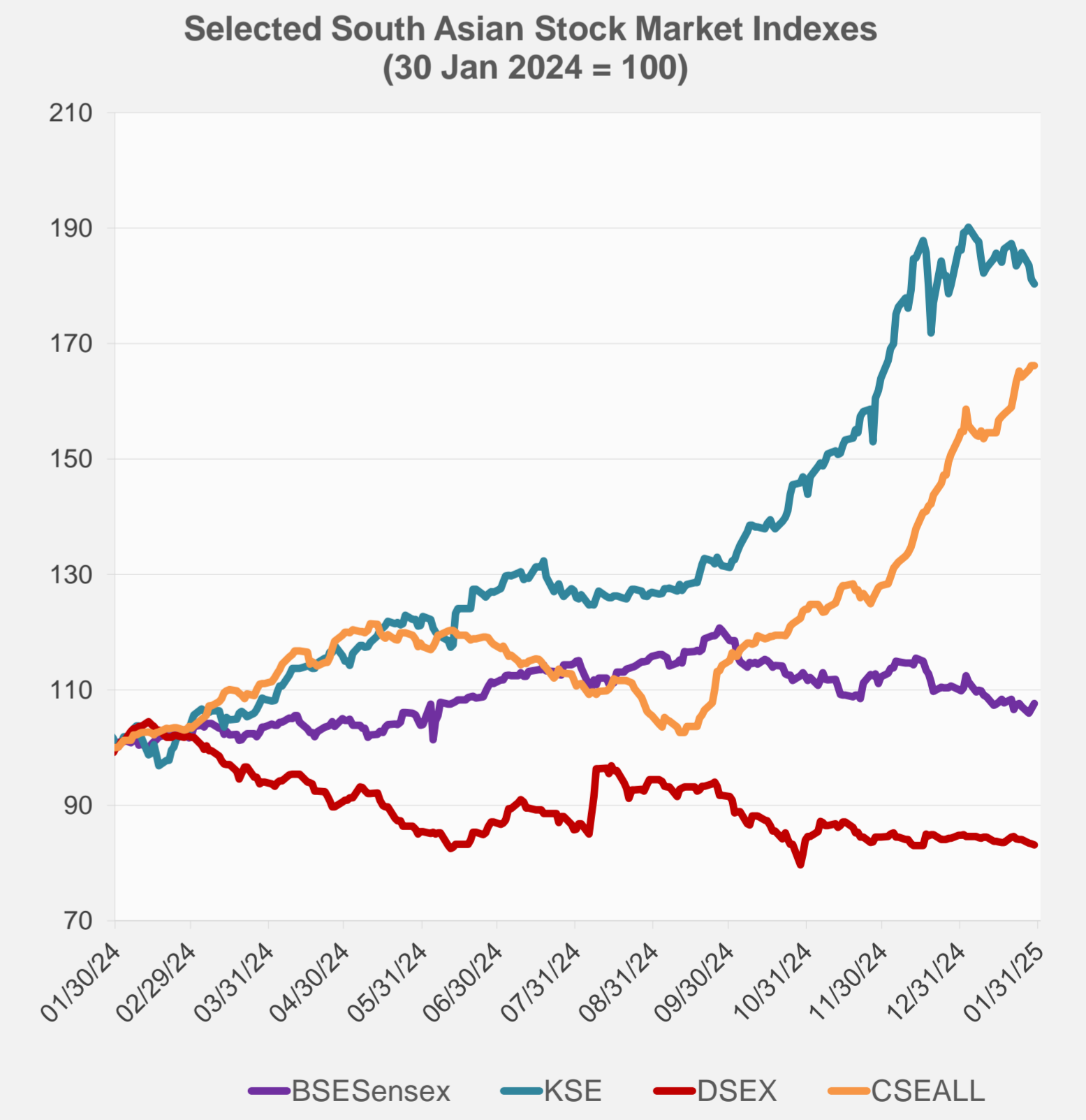
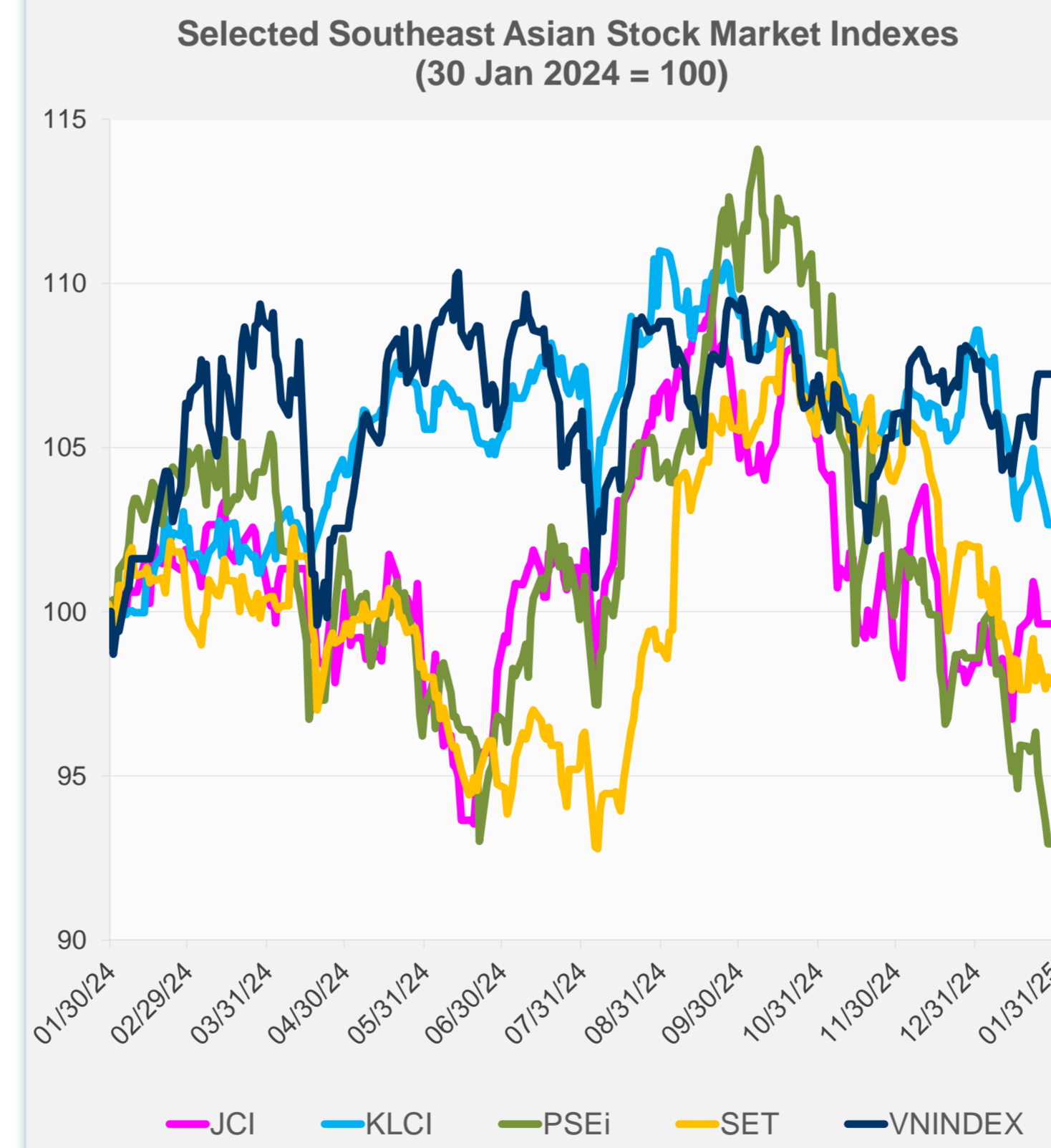
Daily Market Watch STOCK INDEXES

30 January 2025, 9:00 AM Manila

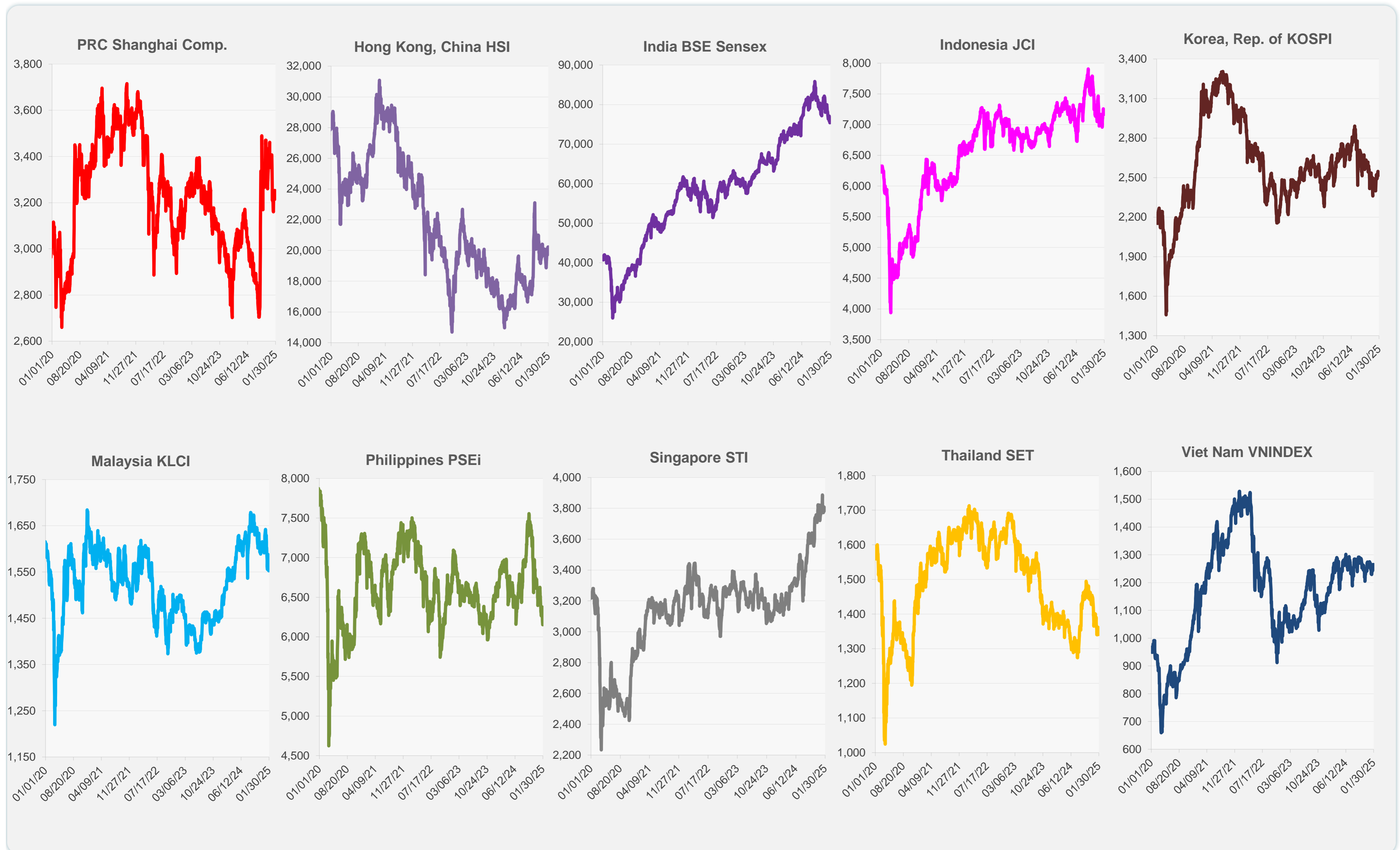
	Latest Closing	% change from Previous Day	% change from 01-Jan-25
US Dow Jones Ind Avg	44,713.52	-0.31	5.10
US NASDAQ	19,632.32	-0.51	1.67
US S&P 500	6,039.31	-0.47	2.68
UK FTSE 100	8,557.81	0.28	4.71
EURO STOXX 50	5,230.66	0.67	6.84
Japan NIKKEI 225	39,414.78	1.02	-1.20
Bangladesh DSEX	5,112.51	-0.27	-2.02
PRC Shanghai Comp.	3,250.60	0.00	-3.02
Hong Kong, China HSI	20,225.11	0.00	0.82
India BSE Sensex	76,532.96	0.83	-2.51
Indonesia JCI	7,166.06	0.00	1.22
Korea, Rep. of KOSPI	2,536.80	0.00	5.72
Malaysia KLCI	1,552.69	0.00	-5.46
Pakistan KSE 100	111,487.36	-0.48	-4.72
Philippines PSEi	6,153.47	0.00	-5.75
Singapore STI	3,801.07	0.00	0.36
Sri Lanka CSEALL	17,117.18	-0.02	7.35
Taipei, China TWSE	23,525.41	0.00	2.13
Thailand SET	1,343.19	-0.19	-4.07
Viet Nam VNINDEX	1,265.05	0.00	-0.14



NIE = Newly Industrialized Economies



Sources: ADB calculations using data from CEIC Data Company and Haver Analytics.



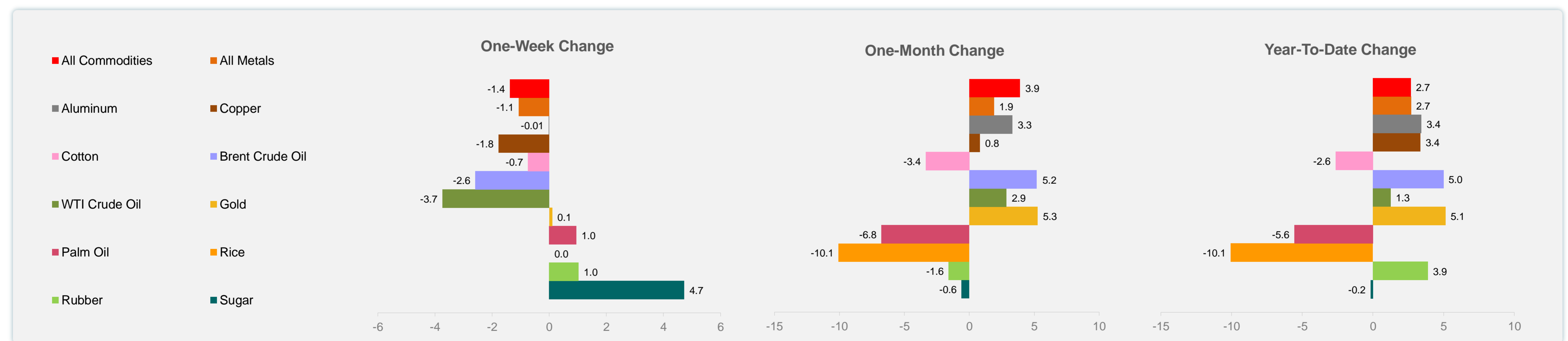
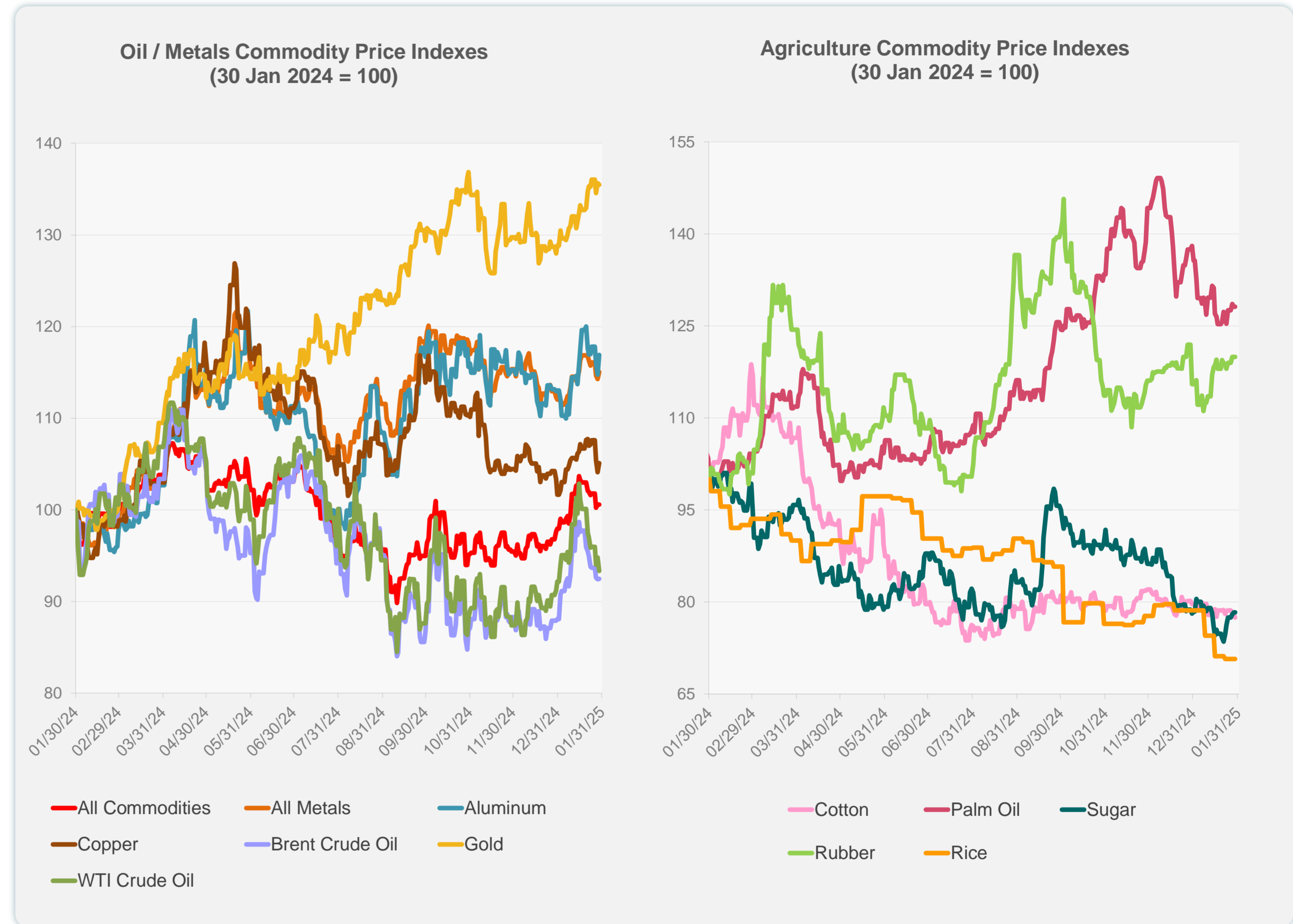
Sources: CEIC Data Company and Haver Analytics.

Daily Market Watch
COMMODITY PRICES

30 January 2025, 9:00 AM Manila

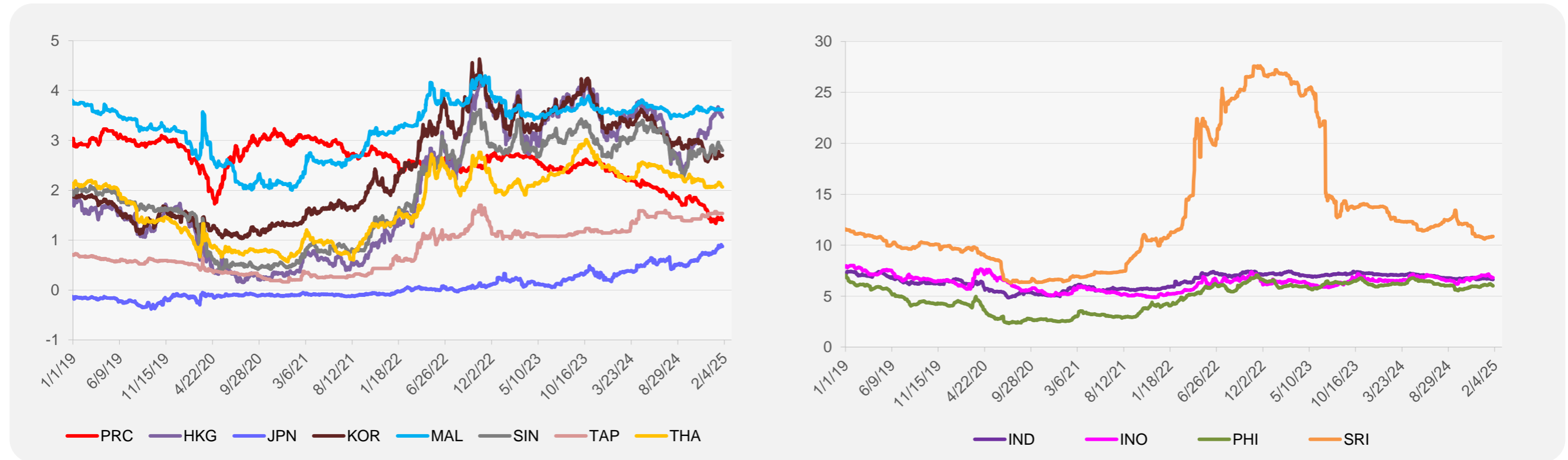
	Unit	Latest Closing	% change from Previous Day	% change from 01-Jan-25
S&P All Commodities	US\$	564.38	0.01	2.68
S&P All Metals	US\$	315.66	0.70	2.70
Aluminum	US\$/metric ton	2,613.47	1.90	3.43
Copper	US\$/metric ton	8,943.80	0.93	3.36
Cotton	US cents/lb	64.16	-0.50	-2.64
Brent Crude Oil	US\$/barrel	77.80	0.04	4.99
WTI Crude Oil	US\$/barrel	72.62	-1.56	1.25
Gold	US\$/troy oz	2,759.36	-0.15	5.14
Palm Oil	US\$/metric tonne	1,039.03	0.00	-5.55
Rice ¹	US\$/metric ton	483.00	0.00	-10.06
Rubber ²	US\$/kg	246.00	0.00	3.89
Sugar	US cents/lb	18.17	0.00	-0.16

¹ Latest closing price from 22 January 2025.
² Singapore Exchange, Ribbed Smoked Sheet Rubber.

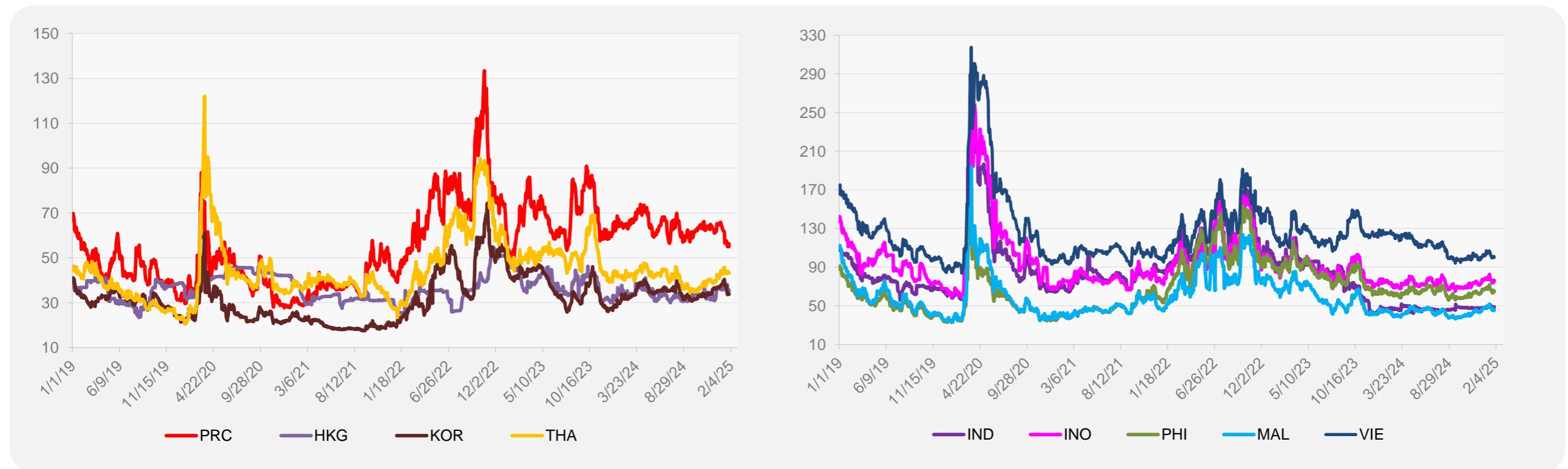


Source: ADB calculations using data from Bloomberg.

5-YEAR LOCAL CURRENCY GOVERNMENT BOND YIELDS (%)



5-YEAR CREDIT DEFAULT SWAP¹



¹ In USD and based on sovereign bonds.
Source: ADB calculations using data from Bloomberg.